

## Pancreas

Table 64. Pancreatic cancer: counts and age-specific rates (per 100,000) for incidence and mortality by sex, Western Australia, 2019

Age Group (years)	Incidence				Mortality			
	Male		Female		Male		Female	
	n	rate	n	rate	n	rate	n	rate
0-14	0	0.0	0	0.0	0	0.0	0	0.0
15-24	0	0.0	0	0.0	0	0.0	0	0.0
25-44	4	N/A	7	N/A	3	N/A	1	N/A
45-64	45	14.0	43	13.2	41	12.8	14	N/A
65-74	46	41.6	41	35.9	37	33.4	35	30.7
75+	73	100.2	65	71.4	67	92.0	64	70.3
<b>Total*</b>	<b>168</b>	<b>12.0</b>	<b>156</b>	<b>10.0</b>	<b>148</b>	<b>10.6</b>	<b>114</b>	<b>7.1</b>

\*Age-standardised rates. Note: Incidence/mortality rates for counts <20 are not provided as they are not reliable.

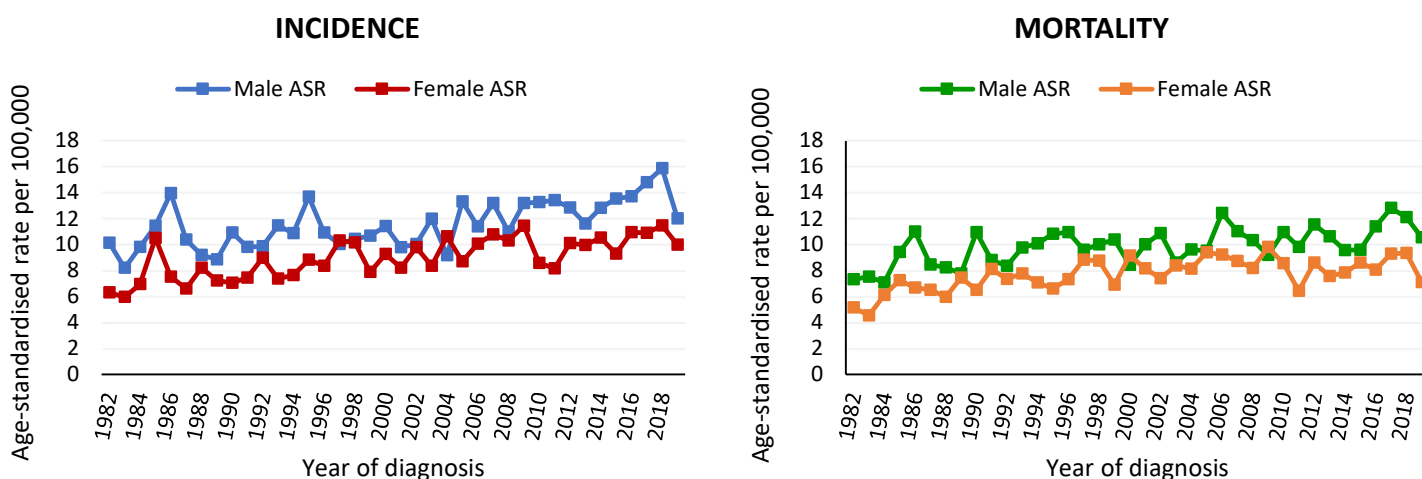


Figure 47. Pancreatic cancer: age-standardised incidence and mortality rates (per 100,000) by sex, Western Australia, 1982-2019

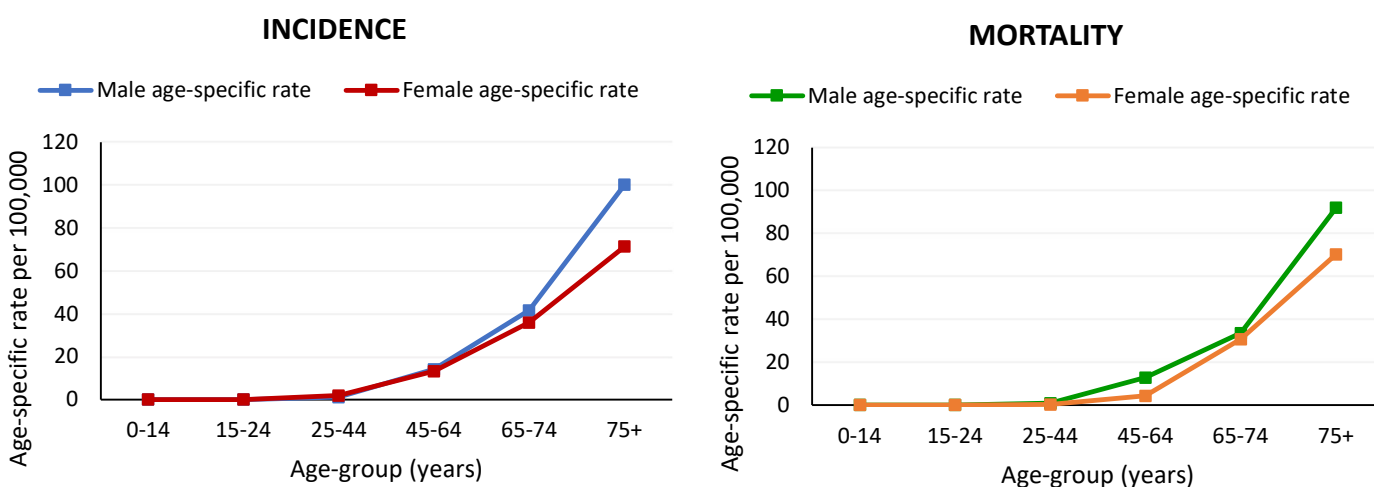


Figure 48. Pancreatic cancer: age-specific incidence and mortality rates (per 100,000) by age-group and sex, Western Australia, 1982-2019

Table 65. Pancreatic cancer: Relative survival (%) by time period, Western Australia, 1995-1999 to 2015-2019

Number of years following initial diagnosis	Relative survival				
	1995-1999	2000-2004	2005-2009	2010-2014	2015-2019
1	16.5%	20.7%	24.1%	37.4%	41.5%
2	7.4%	8.6%	12.0%	19.9%	24.4%
3	6.3%	6.0%	8.2%	15.1%	18.3%
4	6.0%	4.8%	6.7%	13.1%	15.3%
5	5.3%	4.9%	5.7%	11.6%	13.8%

Table 66. Pancreatic cancer: counts and crude rates (per 100,000) for incidence and mortality by health region and sex, Western Australia, 2019

Health region	Incidence				Mortality			
	Male		Female		Male		Female	
	n	rate	n	rate	n	rate	n	rate
<b>WA Metropolitan region</b>								
<i>East Metro</i>	48	13.4	42	11.9	23	6.4	24	6.8
<i>North Metro</i>	44	12.3	41	11.1	51	14.3	44	11.9
<i>South Metro</i>	37	11.5	36	10.9	46	14.3	25	7.6
<b>WA Country Health Services</b>								
<i>Goldfields</i>	2	N/A	3	N/A	2	N/A	1	N/A
<i>Great Southern</i>	4	N/A	6	N/A	4	N/A	4	N/A
<i>Kimberley</i>	2	N/A	1	N/A	0	0.0	0	0.0
<i>Midwest</i>	3	N/A	2	N/A	4	N/A	1	N/A
<i>Pilbara</i>	0	0.0	2	N/A	0	0.0	0	0.0
<i>South West</i>	19	N/A	19	N/A	14	N/A	13	N/A
<i>Wheatbelt</i>	9	N/A	4	N/A	4	N/A	2	N/A

Note: Incidence/mortality rates for counts <20 are not provided as they are not reliable.

Table 67. Pancreatic cancer: estimated cumulative risk to age 75 years by sex, Western Australia, 2019

