

Lung

Table 40. Lung cancer: counts and age-specific rates (per 100,000) for incidence and mortality by sex, Western Australia, 2019

Age Group (years)	Incidence				Mortality			
	Male		Female		Male		Female	
	n	rate	n	rate	n	rate	n	rate
0-14	0	0.0	0	0.0	0	0.0	0	0.0
15-24	1	N/A	0	0.0	0	0.0	1	N/A
25-44	7	N/A	9	N/A	2	N/A	1	N/A
45-64	155	48.4	163	50.2	98	30.6	58	17.9
65-74	241	217.9	196	171.7	125	113.0	98	85.8
75+	289	396.6	196	215.3	201	275.9	137	150.5
Total*	693	48.7	564	35.8	426	30.3	295	18.6

*Age-standardised rates. Note: Incidence/mortality rates for counts <20 are not provided as they are not reliable.

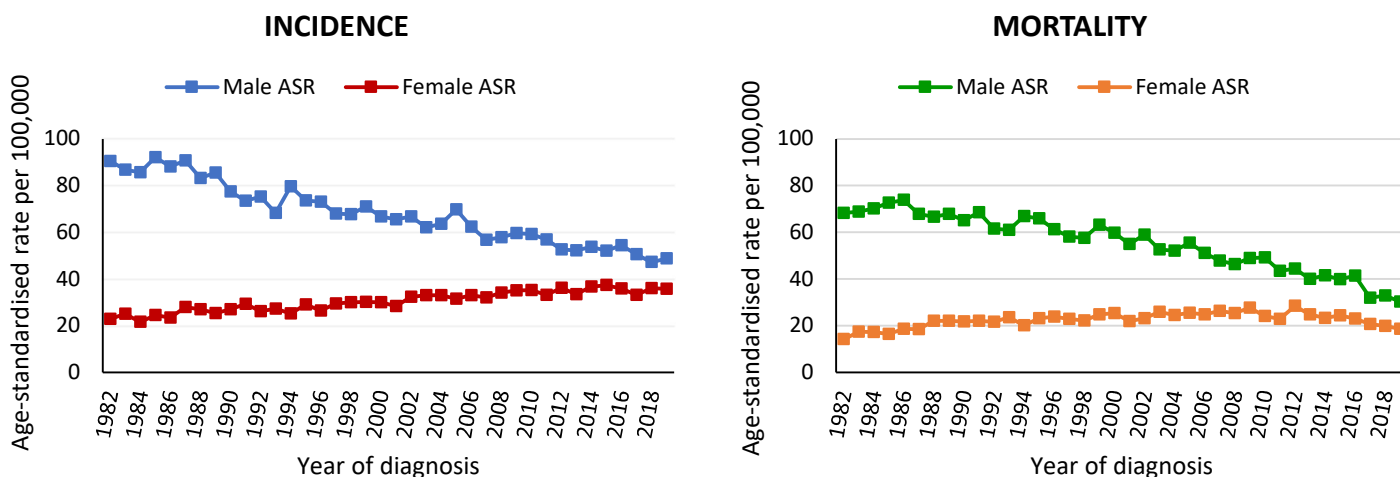


Figure 35. Lung cancer: age-standardised incidence and mortality rates (per 100,000) by sex, Western Australia, 1982-2019

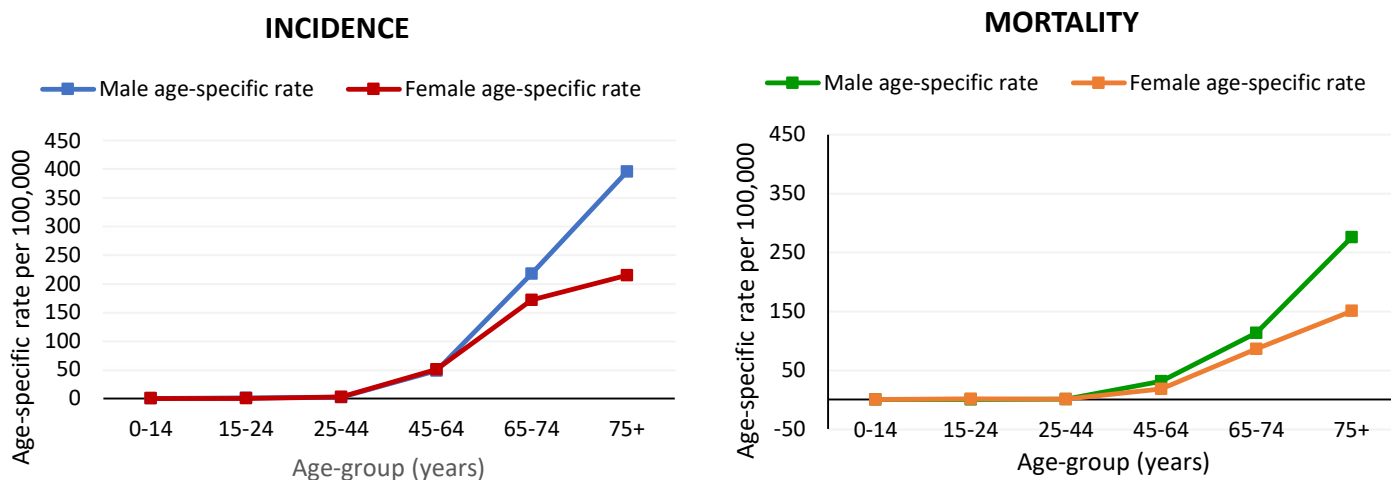


Figure 36. Lung cancer: age-specific incidence and mortality rates (per 100,000) by age-group and sex, Western Australia, 1982-2019

Table 41. Lung cancer: Relative survival (%) by time period, Western Australia, 1995-1999 to 2015-2019

Number of years following initial diagnosis	Relative survival				
	1995-1999	2000-2004	2005-2009	2010-2014	2015-2019
1	32.9%	36.2%	38.3%	45.3%	53.0%
2	19.9%	21.9%	24.2%	30.5%	39.6%
3	15.4%	16.7%	18.8%	23.2%	33.5%
4	13.6%	14.0%	16.0%	19.6%	29.5%
5	11.9%	12.3%	14.3%	17.5%	26.3%

Table 42. Lung cancer: counts and crude rates (per 100,000) for incidence and mortality by health region and sex, Western Australia, 2019

Health region	Incidence				Mortality			
	Male		Female		Male		Female	
	n	rate	n	rate	n	rate	n	rate
WA Metropolitan region								
<i>East Metro</i>	169	47.2	158	44.8	72	20.1	64	18.2
<i>North Metro</i>	152	42.5	134	36.3	115	32.2	77	20.8
<i>South Metro</i>	181	56.2	158	47.9	136	42.2	95	28.8
WA Country Health Services								
<i>Goldfields</i>	15	N/A	10	N/A	11	N/A	2	N/A
<i>Great Southern</i>	22	72.3	15	N/A	14	N/A	12	N/A
<i>Kimberley</i>	13	N/A	5	N/A	4	N/A	4	N/A
<i>Midwest</i>	31	98.8	12	N/A	21	67.0	6	N/A
<i>Pilbara</i>	9	N/A	9	N/A	1	N/A	4	N/A
<i>South West</i>	61	69.5	45	48.9	34	38.8	22	23.9
<i>Wheatbelt</i>	39	100.2	18	N/A	18	N/A	9	N/A
Other WA Address*	1	N/A	0	0.0	0	0.0	0	0.0

*Note: One case exists whereby health region is unknown. Incidence/mortality rates for counts <20 are not provided as they are not reliable.

Table 43. Lung cancer: estimated cumulative risk to age 75 years by sex, Western Australia, 2019

