



# COVID-19 Weekly Surveillance Report

## Table of Contents

<b>Summary for the week 08 May to 14 May 2023 (inclusive)</b> .....	<b>2</b>
<b>Case data</b> .....	<b>3</b>
Figure 1. COVID-19 cases by notification week and test type, Western Australia, 03 January 2022 to 14 May 2023. ....	3
Figure 2. COVID-19 cases by age group and sex, Western Australia, 08 May to 14 May 2023. ....	4
Table 1. COVID-19 reinfections, Western Australia, 02 March 2022 to 14 May 2023. ....	5
Figure 3. 7-day moving average of COVID-19 cases per 100,000 population by Australian jurisdiction, 01 December 2021 to 09 May 2023. ....	5
Figure 4. 7-day moving average of COVID-19 age-specific rates per 100,000 population, Western Australia, 06 February 2022 to 14 May 2023. ....	6
Figure 5. 7-day moving average of COVID-19 case rates per 100,000 population by health region of residence, Western Australia, 06 February 2022 to 14 May 2023. ....	7
Table 2. Number of COVID-19 cases and rates per 100,000 population by reporting week and health region of residence, Western Australia. ....	8
Figure 6 (a). Locally acquired COVID-19 weekly case rates per 100,000 population by Local Government Area, Western Australia, 08 May to 14 May 2023. ....	9
(b) Locally acquired COVID-19 weekly case rates per 100,000 population by Local Government Area, Perth metropolitan area, 08 May to 14 May 2023. ....	9
<b>Aboriginal case summary</b> .....	<b>10</b>
Figure 7. COVID-19 case rates per 100,000 population and rate ratio by Aboriginal status and notification week, Western Australia, 09 October 2022 to 14 May 2023. ....	10
<b>Hospitalisations, intensive care unit (ICU) inpatients and deaths</b> .....	<b>11</b>
Figure 8. 7-day average of COVID-19 cases currently in hospital or in ICU, 09 January 2022 to 14 May 2023. ....	11
Table 3. Number of COVID-19 related deaths by sex and age group, 08 May to 14 May 2023 and 01 January 2022 to 14 May 2023. ....	12
<b>Testing data</b> .....	<b>13</b>
Figure 9. Number of COVID-19 polymerase chain reaction tests and positivity by laboratory category and week of specimen collection, 09 February 2020 to 14 May 2023. ....	13
<b>Appendix 1</b> .....	<b>14</b>
Number of regional cases by postcode, 08 May – 14 May 2023. ....	14

## Summary for the week 08 May to 14 May 2023 (inclusive)

In the week of 08 May to 14 May 2023 there were:

- 4,006 COVID-19 cases reported
  - 487 diagnosed by polymerase chain reaction (PCR) tests
  - 3,519 diagnosed by rapid antigen tests (RAT)
- 1,606 were reinfections (see definition in Table 2)
- 57 new hospital admissions and 1 new admission into an intensive care unit
- 14 deaths, aged 45 - 99 years old
- 4,871 COVID-19 PCR tests conducted

### Surveillance summary

This week, **case numbers** increased by 6% compared to the previous week. Cases diagnosed by PCR remained the same and by RAT increased by 7%. **Reinfections** comprised 40% of total cases this week, compared with 37% last week.

The number of **PCR tests** conducted remained steady compared to the previous week, with a 7-day average positivity rate of 11.3%.

The moving seven-day average **case rate** per 100,000 population increased in all regions except the South West region, which remained steady. The seven-day average case rate for the Perth metropolitan area (23 cases/100,000 population) is approximately 64% higher than the non-metropolitan regions combined (14 cases/100,000 population).

The seven-day average **age-specific rate** increased in most age groups, except the 0 – 9 years age group, which remained steady, and the 20 – 29 and 70+ years age group, which decreased. The highest rates were in the 50 - 69 years age group (25 cases/100,000 population), and the lowest rates in the 0 - 9 years age group (10 cases/100,000 population).

The 7-day average of **hospitalised cases** increased by 8% from 196 last week to 210 this week, while **intensive care unit cases** decreased from 2 last week to 1 this week. **New hospital admissions** related to COVID-19 decreased by 5% from 60 last week to 57 this week, and **direct intensive care unit admissions** decreased from 2 last week to 1 this week.

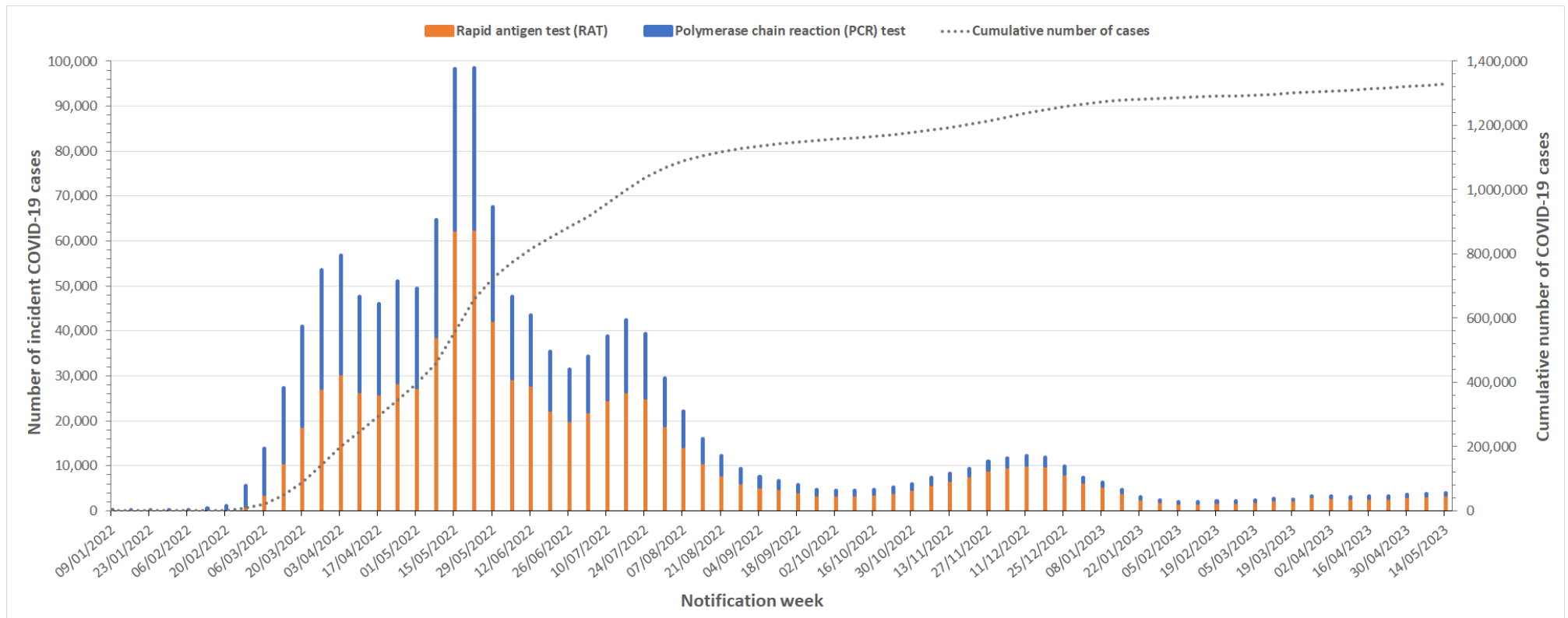
**Deaths** increased this week with 14 deaths reported compared to 12 last week.

This week, 95 cases were reported in the **Aboriginal population**, a 42% increase compared to last week. Case rates in the Aboriginal population are lower than the non-Aboriginal population, with a 7-day average rate ratio of 0.6 this reporting week. There was 1 death reported in the Aboriginal population this week.

**Nationally**, the moving seven-day average case rates increased in most jurisdictions, except New South Wales and Australian Capital Territory, which remained steady, and South Australia, which decreased. Australian Capital Territory reported the highest rate (28 cases/100,000 population) and Queensland the lowest rate (11 cases/100,000 population). The rate in Western Australia was 22 cases/100,000 population.

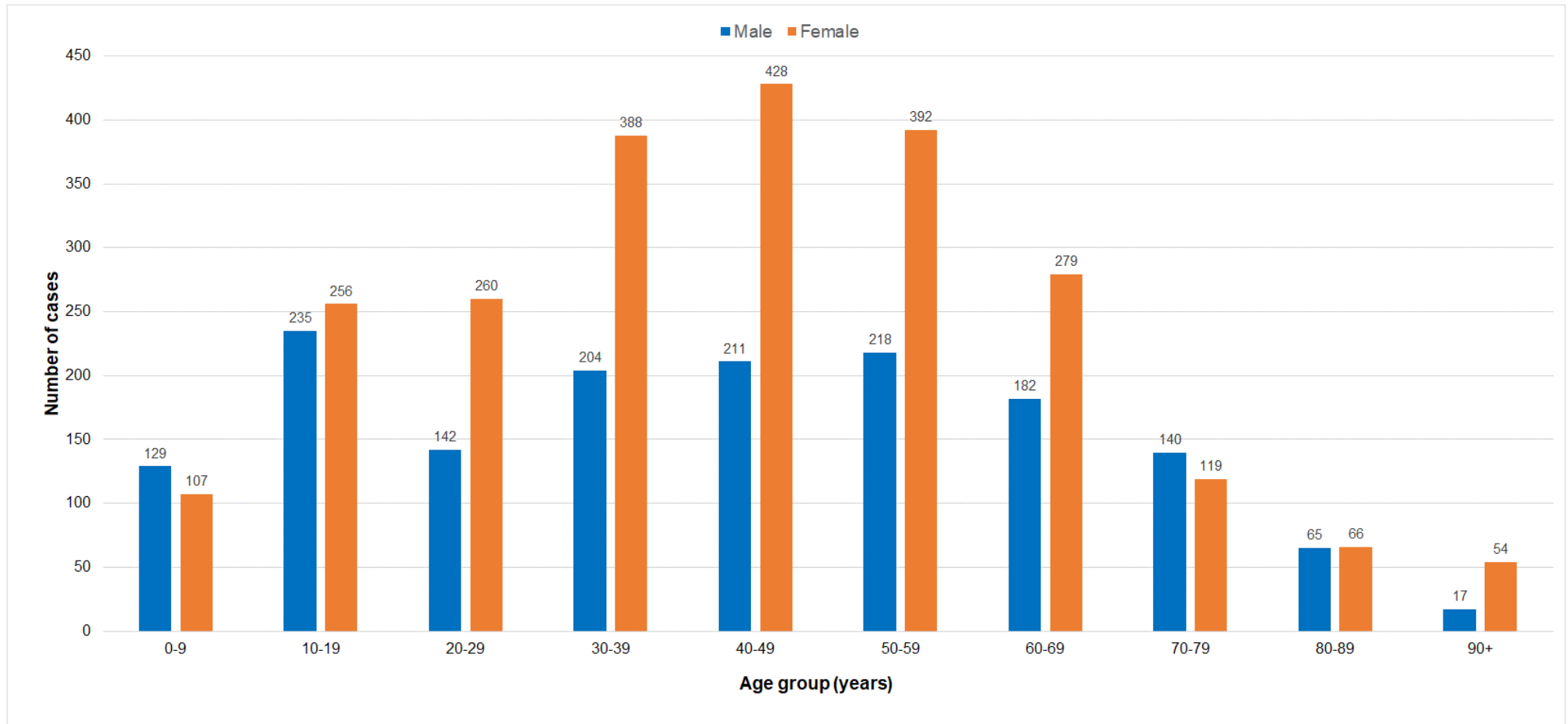
# Case data

Figure 1. COVID-19 cases by notification week and test type, Western Australia, 03 January 2022 to 14 May 2023.



**Notes**  
 Data sourced from Western Australia Department of Health dataset  
 Following the resumption of large passenger cruise vessels entering WA waters on 24<sup>th</sup> October 2022, the daily and weekly number of COVID-19 notifications may intermittently be distorted by inclusion of vessel outbreak cases in WA data, irrespective of the place of residence of the cases  
 Notification week refers to data reported over the 7 days Monday to Sunday.

**Figure 2. COVID-19 cases by age group and sex, Western Australia, 08 May to 14 May 2023.**



**Notes**  
 Data sourced from Western Australia Department of Health dataset  
 Following the resumption of large passenger cruise vessels entering WA waters on 24<sup>th</sup> October 2022, the daily and weekly number of COVID-19 notifications may intermittently be distorted by inclusion of vessel outbreak cases in WA data, irrespective of the place of residence of the cases  
 Higher case numbers in females relative to males, particularly in those aged 20-69 years, are likely due to increased propensity of women to seek and undertake testing, whether by RAT or PCR, rather than true differences in the incidence of infection  
 Sex data is partially incomplete due to the unavailability of this variable during rapid antigen test registration, resulting in a discrepancy to total case numbers reported for the week.

- Males: n=1,543 (39.6%) Females: n=2,349 (60.4%)
- Median age = 42 years; range: 0 to 101 years

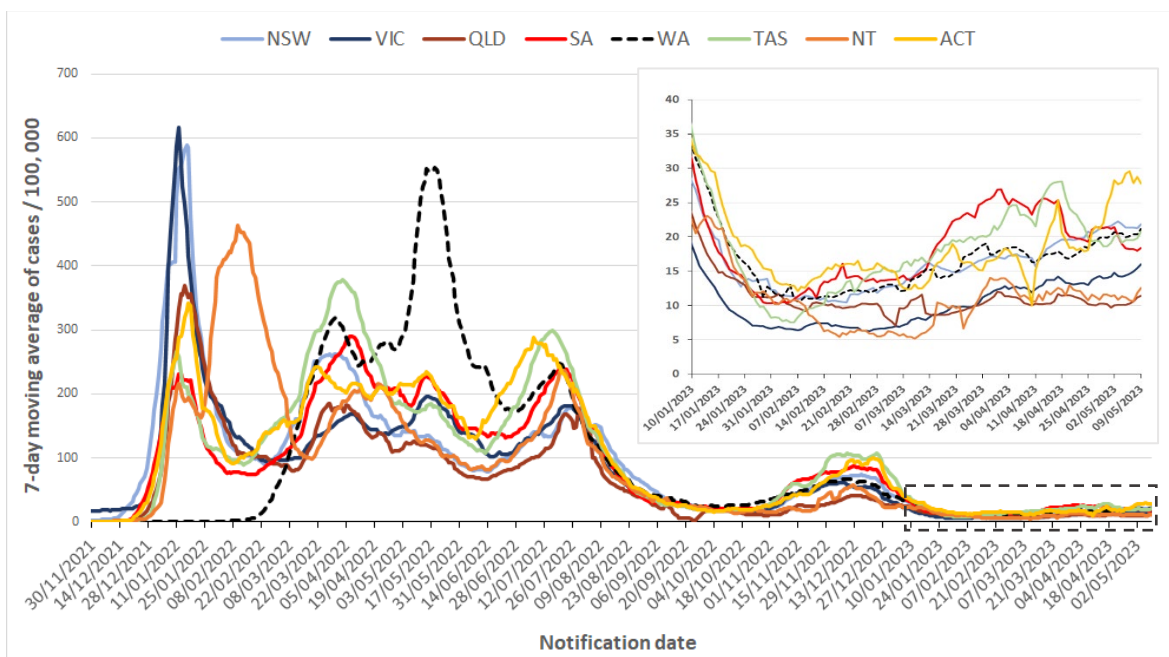
**Table 1. COVID-19 reinfections, Western Australia, 02 March 2022 to 14 May 2023.**

Month	Number of reinfections *
Mar-2022	14
Apr-2022	30
May-2022	115
Jun-2022	871
Jul-2022	5,073
Aug-2022	5,740
Sep-2022	4,053
Oct-2022	2,991
Nov-2022	7,107
Dec-2022	11,179
Jan-2023	5,499
Feb-2023	3,581
Mar-2023	5,041
Apr-2023	5,536
<b>May-2023<sup>^</sup></b>	<b>3,150</b>
<b>Total</b>	<b>59,980</b>

\* Reinfection definition as per [Series of National Guidelines \(SoNG\)](#) published by the Communicable Disease Network Australia (CDNA): between 2<sup>nd</sup> March 2022 and 8<sup>th</sup> July 2022, COVID-19 reinfections were defined as a positive COVID-19 test that occurred more than 12 weeks after an initial infection. From 9 July 2022 to 13 October 2022, COVID-19 reinfections were defined as a positive COVID-19 test occurring 28 days after previously recovering from the virus. From 14 October 2022 to date, COVID-19 reinfections are defined as a positive COVID-19 test occurring 35 days after the date of positive test for the most recent infection.

<sup>^</sup> Data up to 14<sup>th</sup> May 2023 inclusive

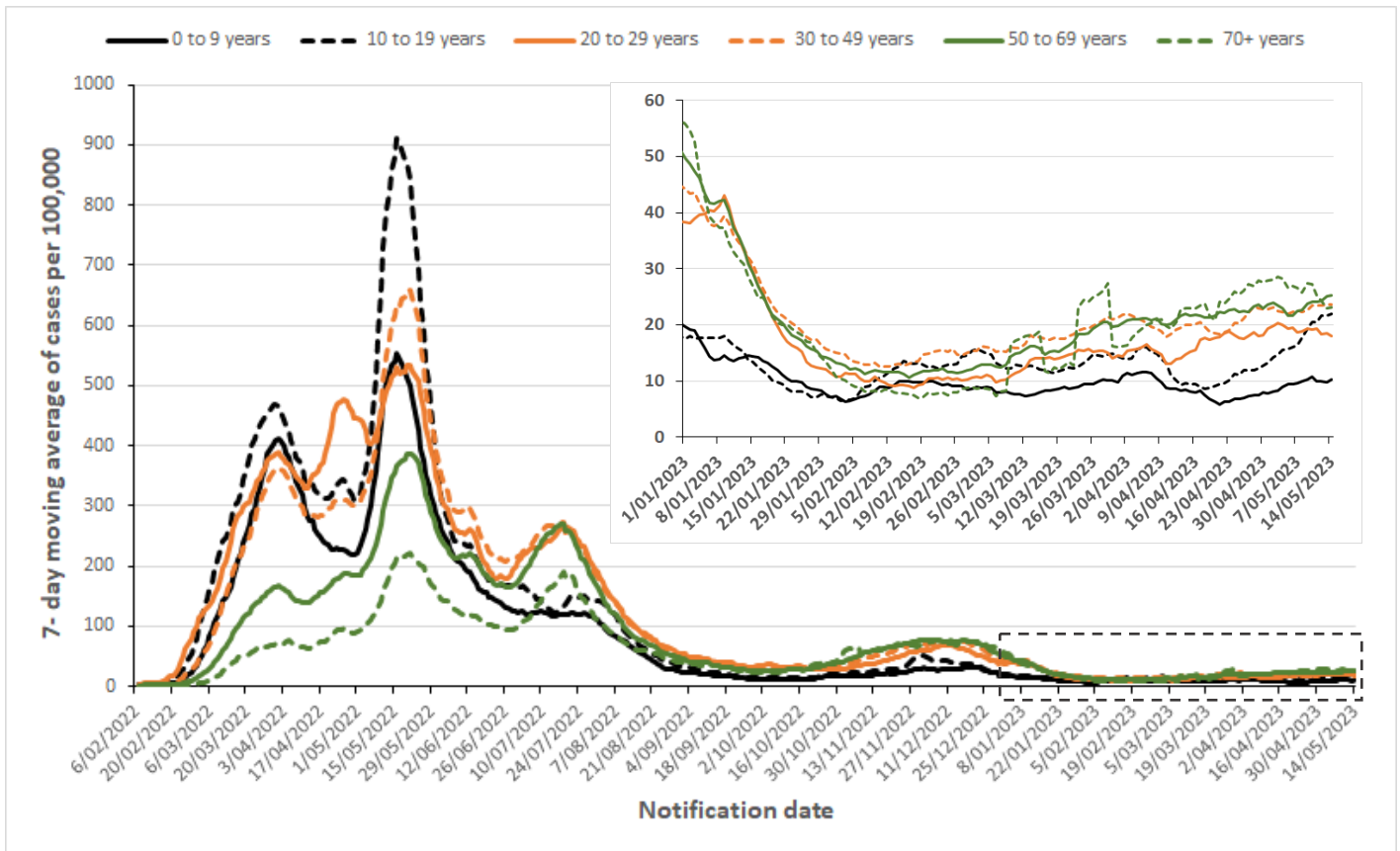
**Figure 3. 7-day moving average of COVID-19 cases per 100,000 population by Australian jurisdiction, 01 December 2021 to 09 May 2023.**



**Notes**

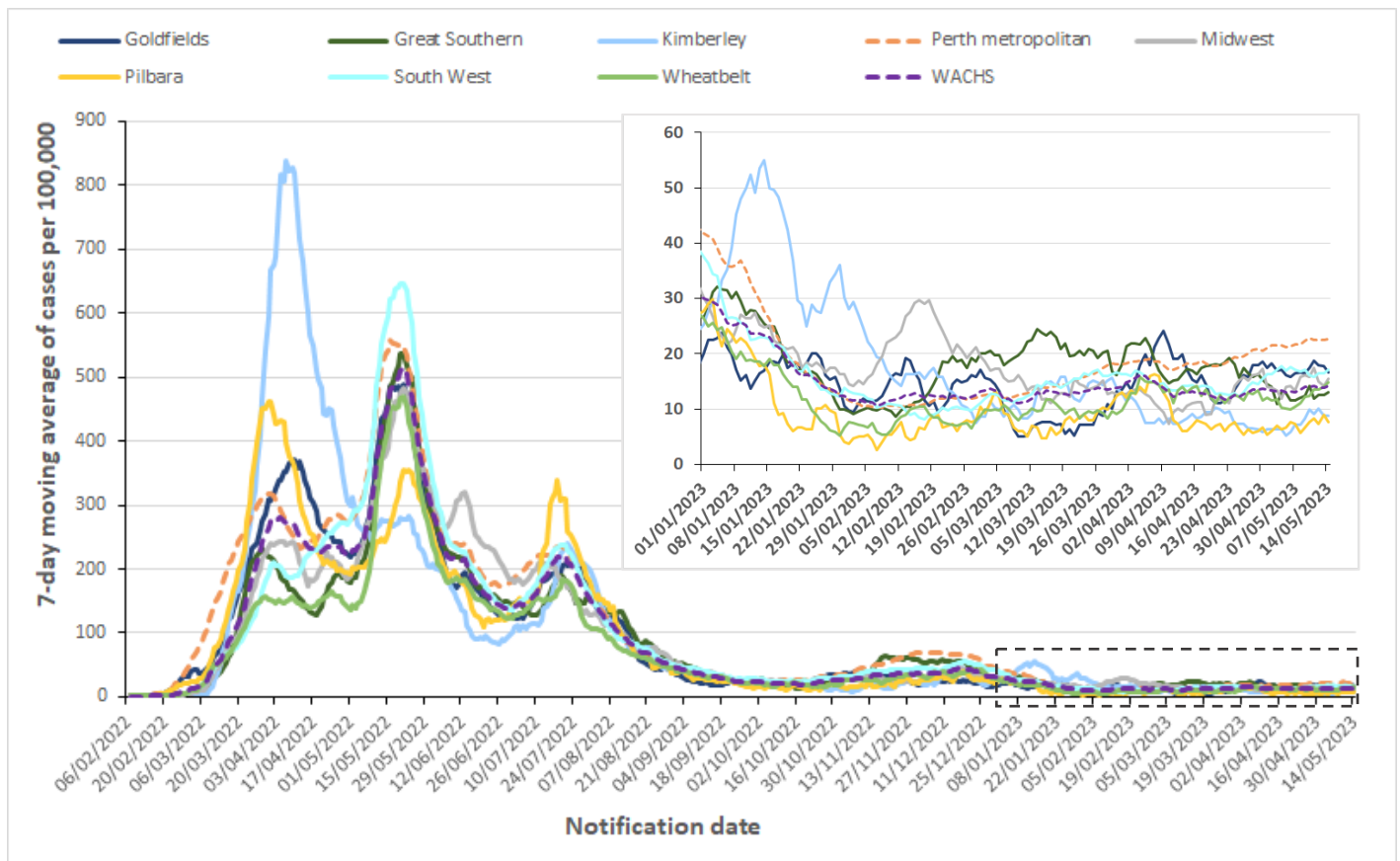
Data sourced from the jurisdictional health department datasets  
 Notification date refers to the date that a case is notified to the relevant jurisdictional health department  
 Data is only available up to and including Monday of current report week for all jurisdictions except Western Australia  
 Population denominators are sourced from Australian Bureau of Statistics December 2020 estimates.

**Figure 4. 7-day moving average of COVID-19 age-specific rates per 100,000 population, Western Australia, 06 February 2022 to 14 May 2023.**



**Notes**  
 Data sourced from Western Australia Department of Health dataset  
 Notification date refers to the date that a case is notified to Western Australia Department of Health  
 Following the resumption of large passenger cruise vessels entering WA waters on 24<sup>th</sup> October 2022, the daily and weekly number of COVID-19 notifications may intermittently be distorted by inclusion of vessel outbreak cases in WA data, irrespective of the place of residence of the cases  
 Population denominator sourced from Australian Bureau of Statistics June 2021 estimates.

**Figure 5. 7-day moving average of COVID-19 case rates per 100,000 population by health region of residence, Western Australia, 06 February 2022 to 14 May 2023.**



**Notes**  
 Data sourced from Western Australia Department of Health dataset  
 Notification date refers to the date that a case is notified to Western Australia Department of Health  
 Western Australia Country Health Service (WACHS) region includes all non-metropolitan health regions: Central-Wheatbelt, Goldfields, Great Southern, Kimberley, Midwest, Pilbara and South West  
 Perth metropolitan region includes East Metropolitan Health Service, North Metropolitan Health Service and South Metropolitan Health Service  
 Population denominator sourced from Australian Bureau of Statistics 2020 estimates.

**Table 2. Number of COVID-19 cases and rates per 100,000 population by reporting week and health region of residence, Western Australia.**

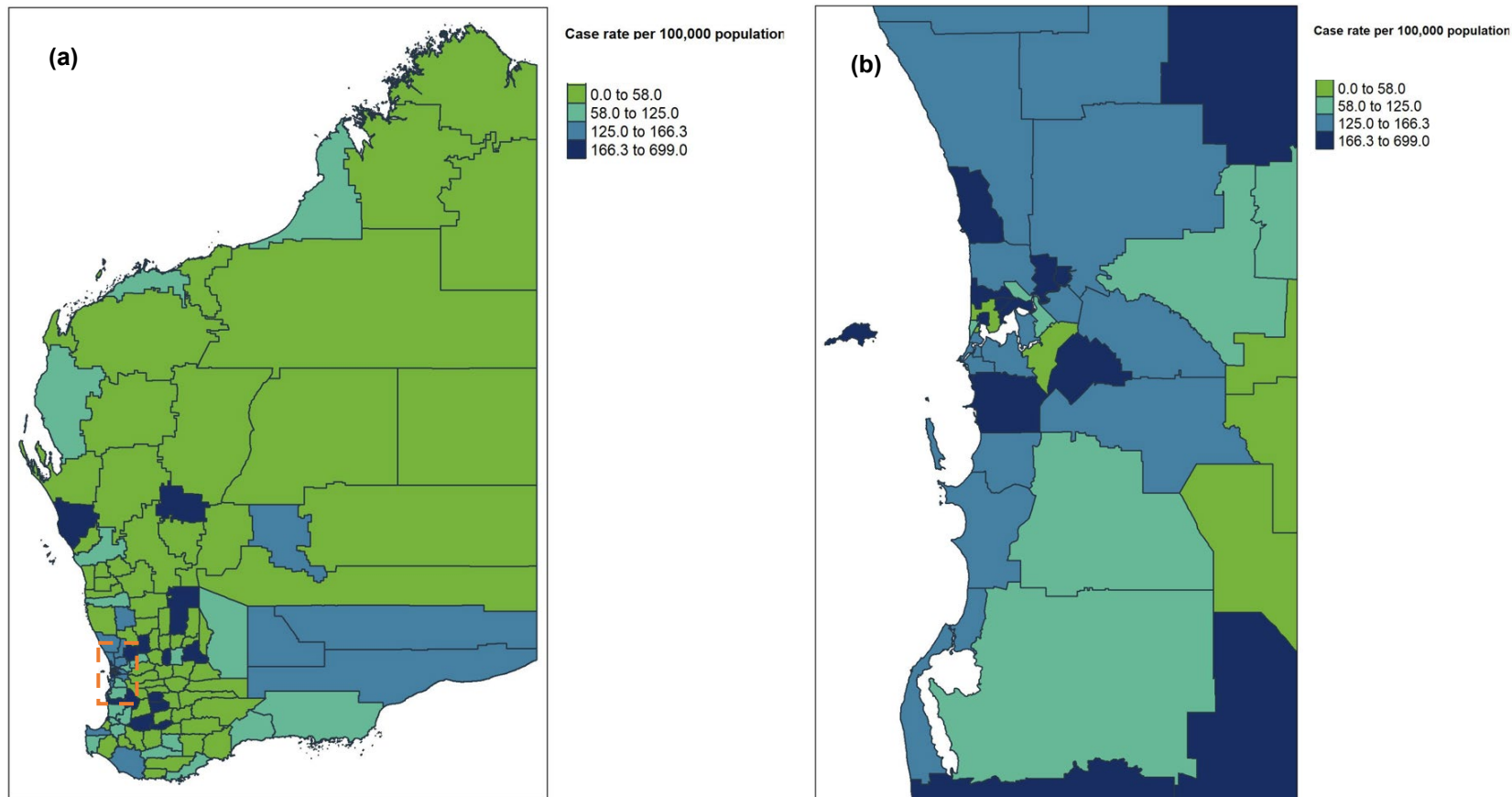
Health Region		Current report week		Previous report week	
		Week 08 May to 14 May 2023		Week 01 May to 07 May 2023	
		Number	Rates <sup>^</sup>	Number	Rates <sup>^</sup>
Perth metropolitan region		<b>3,372</b>	<b>158</b>	<b>3,238</b>	<b>152</b>
WACHS Regions		<b>533</b>	<b>100</b>	<b>491</b>	<b>92</b>
	Goldfields	63	117	62	115
	Great Southern	56	91	50	82
	Kimberley	19	53	18	50
	Midwest	67	108	58	93
	Pilbara	30	48	29	46
	South West	219	120	218	120
	Wheatbelt	79	104	56	74
Other*		<b>101</b>	-	<b>47</b>	-
<b>Total</b>		<b>4,006</b>	<b>147</b>	<b>3,776</b>	<b>140</b>

**Notes**  
 Data sourced from Western Australia Department of Health dataset  
 Notification date refers to the date that a case is notified to Western Australia Department of Health  
 Western Australia Country Health Service (WACHS) region includes all the non-metropolitan regions: Central-Wheatbelt, Goldfields, Great Southern, Kimberley, Midwest, Pilbara and South West  
 Perth Metropolitan region includes East Metropolitan Health Service, North Metropolitan Health Service and South Metropolitan Health Service  
 \* Other includes cases with overseas and interstate residential addresses, and cases without residential address information  
 ^ Rates reported as cases per 100,000 population. The total rate excludes "Other" cases, as there is no denominator population representing this group.  
 Following the resumption of large passenger cruise vessels entering WA waters on 24<sup>th</sup> October 2022, the daily and weekly number of COVID-19 notifications may intermittently be distorted by inclusion of vessel outbreak cases in WA data, irrespective of the place of residence of the cases  
 Population denominator is sourced from Australian Bureau of Statistics 2020 estimates.



Figure 6 (a). Locally acquired COVID-19 weekly case rates per 100,000 population by Local Government Area, Western Australia, 08 May to 14 May 2023.

(b) Locally acquired COVID-19 weekly case rates per 100,000 population by Local Government Area, Perth metropolitan area, 08 May to 14 May 2023.



**Notes**

Data sourced from Western Australia Department of Health dataset

Notification date refers to the date that a case is notified to Western Australia Department of Health

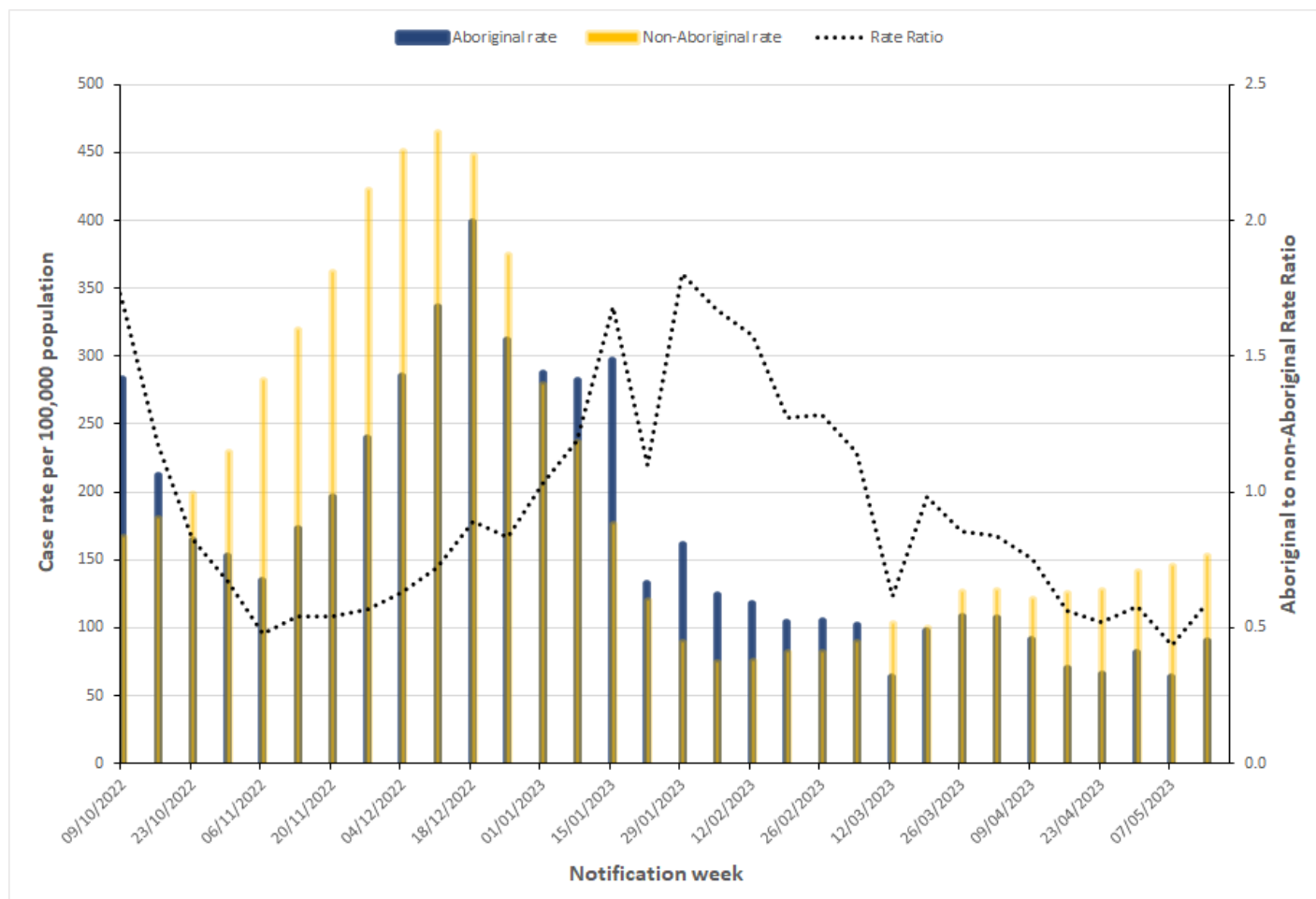
Areas on the map are defined by Local Government Area (LGA) boundaries

Cases are represented on the map according to their place of usual residence in an LGA (no information for specific location of acquisition)

Population denominator is sourced from Australian Bureau of Statistics 2020 estimates.

## Aboriginal case summary

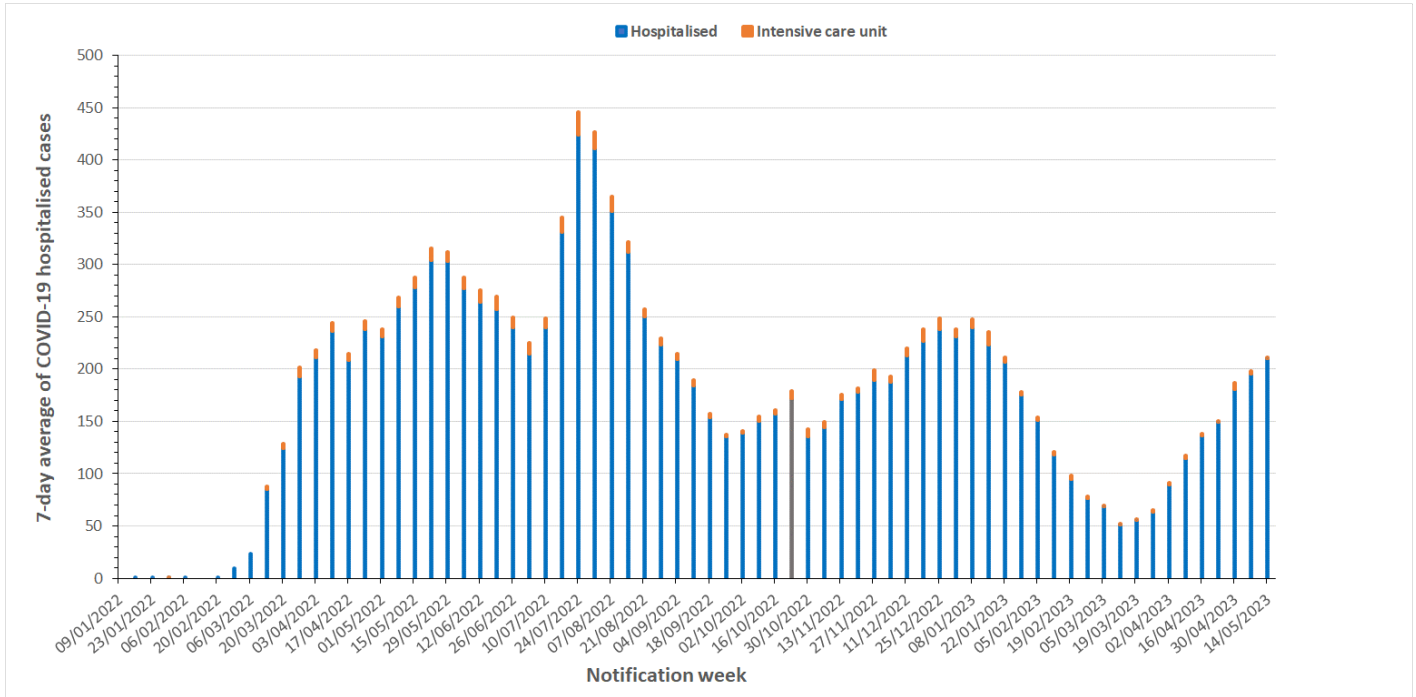
Figure 7. COVID-19 case rates per 100,000 population and rate ratio by Aboriginal status and notification week, Western Australia, 09 October 2022 to 14 May 2023.



**Notes**  
 Data sourced from Western Australia Department of Health dataset  
 Notification week refers to data reported over the 7 days Monday to Sunday  
 Aboriginal status is defined as those who identify as 'Aboriginal and Torres Strait Islander (TSI) origin'/'Aboriginal but not TSI origin'/'TSI but not Aboriginal origin'  
 Cases where Aboriginal status was not stated were designated as non-Aboriginal  
 Population denominator data were sourced from Australian Bureau of Statistics 2020 estimates  
 Rate ratio is calculated by dividing the Aboriginal rate by the non-Aboriginal rate, with a 7-day average of the respective rate ratios applied to smooth the trend

# Hospitalisations, intensive care unit (ICU) inpatients and deaths

Figure 8. 7-day average of COVID-19 cases currently in hospital or in ICU, 09 January 2022 to 14 May 2023.



**Notes**

Data sourced from Western Australia Department of Health dataset  
 Notification week refers to data reported over the 7 days Monday to Sunday  
 ‘Hospitalised’ relates to active and cleared COVID-19 cases that are current hospital inpatients. The reason for admission may be unrelated to COVID-19 for some people  
 ‘Intensive care unit’ (ICU) is a subset of hospitalised and relates to active/cleared COVID-19 cases that are currently in an ICU  
 The definition of COVID-19 related hospitalisation was updated on 21 October 2022 to exclude cases where more than 60 days have passed since their positive COVID-19 test. This new definition more accurately captures cases in whom COVID-19 may have contributed to their reason for ongoing hospitalisation. Data reported after 21 October cannot be compared directly to data recorded prior to that date.

**Table 3. Number of COVID-19 related deaths by sex and age group, 08 May to 14 May 2023 and 01 January 2022 to 14 May 2023.**

	<b>Current report week</b> <b>Week 08 May – 14 May 2023</b>	<b>Year 2022 to date</b> <b>1 Jan 2022 – 14 May 2023</b>
<b>Sex</b>	<b>Deaths (n= 14)</b>	<b>Deaths (n= 1,033)</b>
<b>Female</b>	9 (64.3%)	499 (48.3%)
<b>Male</b>	5 (35.7%)	534 (51.7%)
<b>Unspecified</b>	0 (0%)	0 (0%)
<b>Age group (years)</b>		
<b>0-9</b>	0 (0%)	0 (0%)
<b>10-19</b>	0 (0%)	2 (0.2%)
<b>20-29</b>	0 (0%)	0 (0%)
<b>30-39</b>	0 (0%)	6 (0.6%)
<b>40-49</b>	1 (7.1%)	13 (1.3%)
<b>50-59</b>	0 (0%)	31 (3.0%)
<b>60-69</b>	1 (7.1%)	68 (6.6%)
<b>70-79</b>	3 (21.4%)	191 (18.5%)
<b>80-89</b>	5 (35.8%)	396 (38.3%)
<b>90+</b>	4 (28.6%)	326 (31.5%)

**Notes**

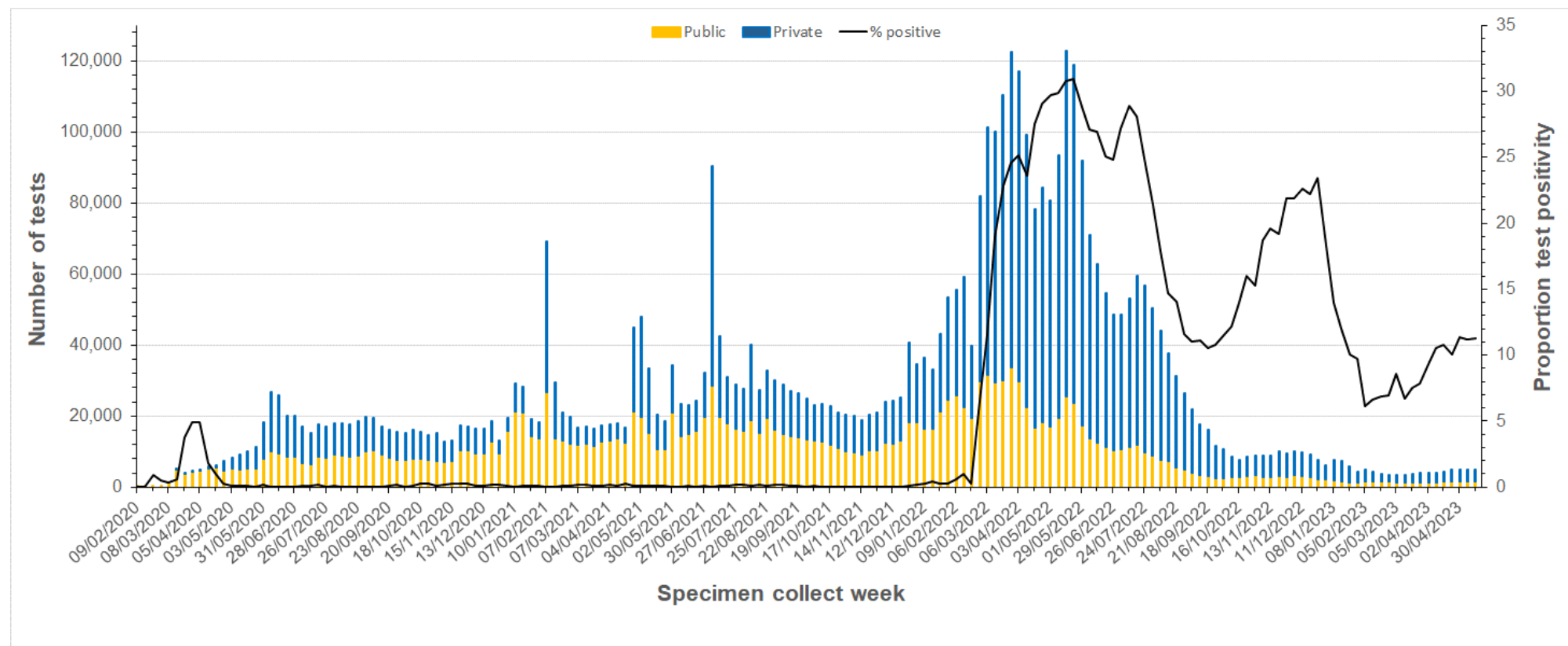
Data sourced from Western Australia Department of Health dataset

Deaths are counted by notification date and may include historical deaths that occurred (i.e. date of death) prior to the current report week

Deaths are not necessarily associated with hospital and/or ICU admissions

## Testing data

Figure 9. Number of COVID-19 polymerase chain reaction tests and positivity by laboratory category and week of specimen collection, 09 February 2020 to 14 May 2023.



### Notes

Data sourced from Western Australian public and private pathology laboratories

Specimen collect week refers to specimens collected between Monday to Sunday

Number of tests includes both positive and negative tests

From 01 October 2022, testing at private pathology providers requires a referral from a GP

From 03 March 2023, Murdoch COVID-19 public PCR testing clinic closed. From this time forward public access to COVID-19 PCR testing is only via GP referral to private pathology providers.

# Appendix 1

## Number of regional cases by postcode, 08 May – 14 May 2023

WACHS Regions	Postcode	Week 08 May to 14 May 2023	WACHS Regions	Postcode	Week 08 May to 14 May 2023	WACHS Regions	Postcode	Week 08 May to 14 May 2023
Goldfields	6429	<5	Pilbara	6714	16	Wheatbelt (continued)	6315	<5
	6430	36		6718	<5		6390	<5
	6432	6		6722	7		6391	<5
	6437	<5		6751	<5		6392	<5
	6438	<5		6753	5		6401	5
	6442	<5	South West	6225	5		6409	<5
	6443	<5		6226	<5		6410	<5
	6450	12		6230	64		6413	<5
Great Southern	6120	<5		6232	11		6415	9
	6316	<5		6233	30		6425	<5
	6317	<5		6236	5		6477	<5
	6318	<5		6237	<5		6501	6
	6320	<5		6239	6		6502	<5
	6322	<5	6245	<5	6503		<5	
	6326	<5	6251	<5	6510		<5	
	6330	44	6254	<5	6516	<5		
	6333	<5	6255	<5	6560	6		
	6348	<5	6258	8	6562	<5		
6395	<5	6260	<5	6566	8			
Kimberley	6725	9	6262	<5	6603	<5		
	6726	<5	6271	8				
	6728	<5	6280	37				
	6740	<5	6281	13				
	6743	<5	6282	<5				
	6765	<5	6284	<5				
Midwest	6515	<5	6285	10				
	6525	<5	6290	5				
	6528	<5	Wheatbelt	6041	5			
	6530	45		6302	<5			
	6532	12		6304	<5			
	6535	<5		6309	<5			
	6640	<5		6311	<5			
	6701	<5		6312	9			

### Notes

Data sourced from Western Australia Department of Health dataset

Exact number of cases less than 5 not reported for confidentiality

Notification date refers to the date in which a case is notified to Western Australia Department of Health

Case data is based on the residential postcode of each case

Western Australia Country Health Service (WACHS) includes Goldfields, Great Southern, Kimberley, Midwest, Pilbara, South West and Wheatbelt public health regions

**This document can be made available in alternative formats on request for a person with disability.**

© Department of Health 2023

Copyright to this material is vested in the State of Western Australia unless otherwise indicated. Apart from any fair dealing for the purposes of private study, research, criticism or review, as permitted under the provisions of the *Copyright Act 1968*, no part may be reproduced or re-used for any purposes whatsoever without written permission of the State of Western Australia.

[health.wa.gov.au](https://health.wa.gov.au)