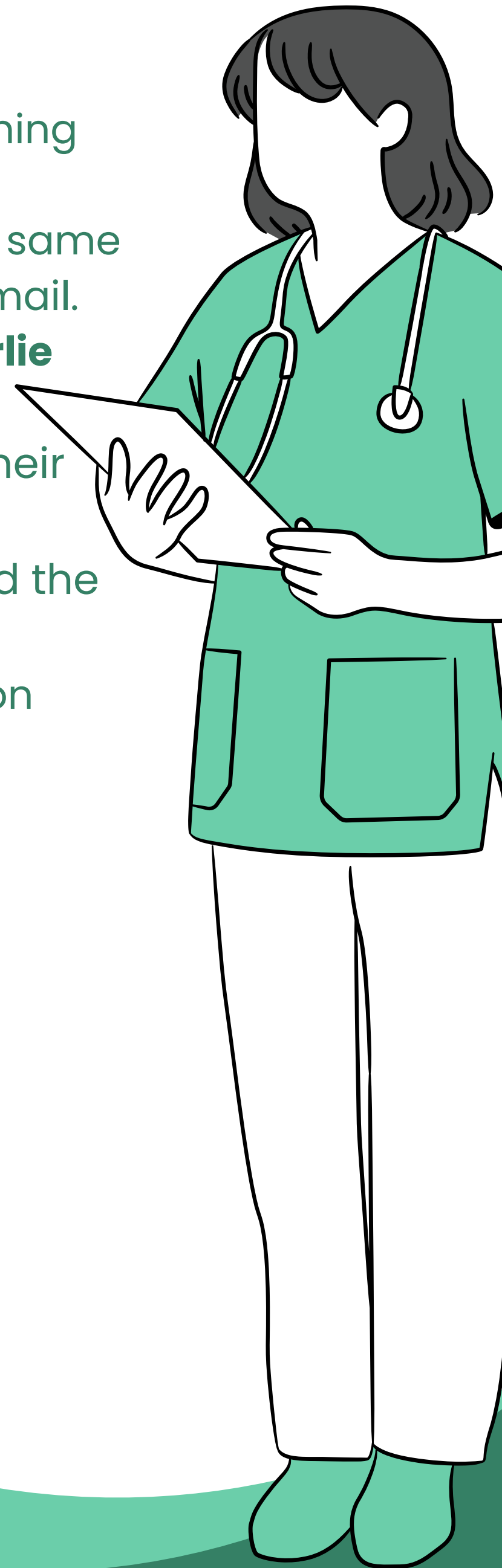


2025 BASIC PHYSICIAN TRAINING (ADULT)



KEY INFORMATION

- **Applicants must be PGY2 in order to apply** (to commence training as a PGY3).
- **Shorter application process for continuing trainees** within the same network. More information will be sent to current trainees via email.
- **WACHS employees** from **Albany, Bunbury, Geraldton, Kalgoorlie and Broome** are eligible to apply for BPT year 1.
 - WACHS applicants will have the opportunity to indicate their preferred training network. Successful applicants will be assigned to training networks based on merit ranking and the availability of positions according to their preferences.
 - More information will be available in the 2025 BPT Application Guide, so be sure to check it out!
- **Additional application marks for:**
 - rural and remote clinical experience
 - completion of RAPTOR program
 - identify as Aboriginal or Torres Strait Islander
- Applications must be made through **MedCareersWA**.



APPLICATIONS OPEN

2 SEPTEMBER 2024

MORE INFORMATION

